

PGC Series

Electric Collaborative Parallel Gripper



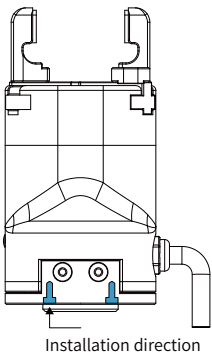
PGC-50-35
PGC-140-50
PGC-300-60

DH-Robotics PGC series of collaborative parallel electric grippers is an electric gripper mainly used in cooperative manipulators. It has the advantages of high protection level, plug and play, large load and so on. The PGC series combines precision force control and industrial aesthetics. In 2021, it won two industrial design awards, the Red Dot Award and the IF Award.



Installation

1. Bottom installation : use bottom screw holes for installation



Product Features

● High protection level

The protection level of PGC series is up to IP67, so the PGC series is able to work under harsh conditions such as machine tending environment.

● Plug & Play

PGC series supports plug & play with most collaborative robot brands on the market which is easier to control and program.

● High Load

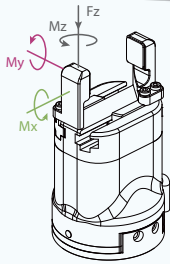
The gripping force of the PGC series could reach 300 N, and the maximum load can reach 6 kg, which can meet more diverse gripping needs.



Application

With collaborative robots, it can complete a series of complex processes including gripping, handling, and assembly in scenarios such as medical automation, 3C electronics, new energy, and new robot retail.

PGC-50-35



Static Vertical Allowable Load

Fz 150 N

Allowable Loading Moment

Mx 2.5 N·m

My 2 N·m

Mz 3 N·m

*① It depends on the shape of the grasping object, the material and friction of the contact surface, and the acceleration of the motion, if you have any questions, please contact us.

*② Use optional communication, need external communication conversion box, please consult the sales staff for details

Parameters

Product Parameter

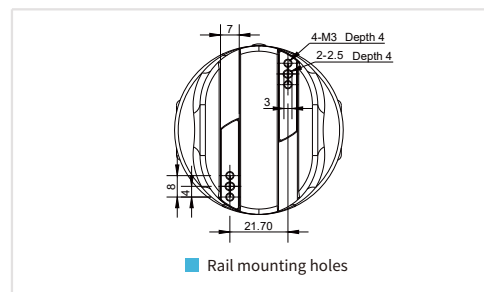
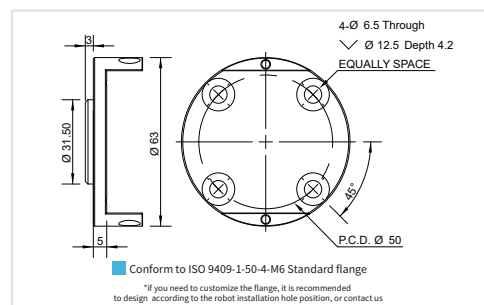
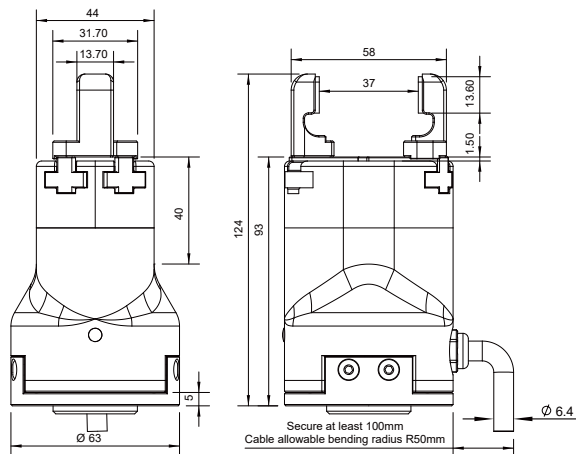
Gripping force (per jaw)	15~50 N
Stroke	37 mm
Recommended workpiece weight * ^①	1 kg
Opening/closing time	0.7 s/0.7 s
Repeat accuracy (position)	± 0.03 mm
Noise emission	< 50 dB
Weight	0.5 kg
Driving method	Precise planetary gears + Rack and pinion
Size	124 mm x 63 mm x 63 mm

Working Environment

Communication interface	Standard: Modbus RTU (RS485), Digital I/O Optional: TCP/IP, USB2.0, CAN2.0A, PROFINET, EtherCAT * ^②
Rated voltage	24 V DC ± 10%
Rated current	0.25 A
Peak current	0.5 A
IP class	IP 54
Recommended environment	0~40°C, under 85% RH
Certification	CE, FCC, RoHS

<input checked="" type="checkbox"/>	<input checked="" type="checkbox"/>	<input checked="" type="checkbox"/>	<input checked="" type="checkbox"/>	<input checked="" type="checkbox"/>	<input checked="" type="checkbox"/>	<input type="checkbox"/>
Build-in Controller	Gripping Force Adjustable	Position Adjustable	Speed Adjustable	Drop Detection	Plug & Play	Self-locking Mechanism

Technical Drawings



PGE Series

RGI Series

RGD Series

PGI Series

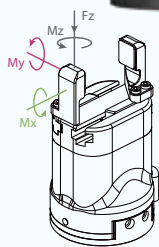
PGS Series

PGC Series

AG Series

CG Series

PGC-140-50



Static Vertical Allowable Load

Fz 300 N

Allowable Loading Moment

Mx 7 N·m

My 7 N·m

Mz 7 N·m

*① It depends on the shape of the grasping object, the material and friction of the contact surface, and the acceleration of the motion, if you have any questions, please contact us.

*② Use optional communication, need external communication conversion box, please consult the sales staff for details

Parameters

Product Parameter

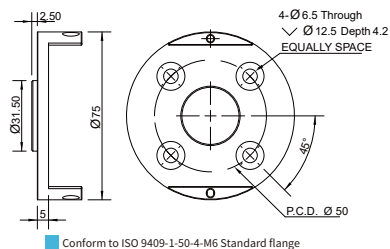
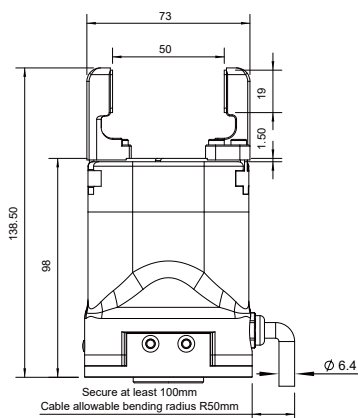
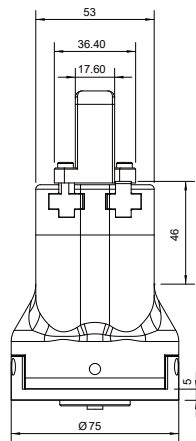
Gripping force (per jaw)	40~140 N
Stroke	50 mm
Recommended workpiece weight *①	3 kg
Opening/closing time	0.6 s/0.6 s
Repeat accuracy (position)	± 0.03 mm
Noise emission	< 50 dB
Weight	1 kg
Driving method	Precise planetary gears + Rack and pinion
Size	138.5 mm x 75 mm x 75 mm

Working Environment

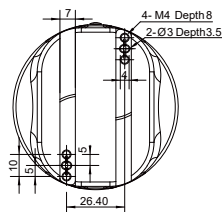
Communication interface	Standard: Modbus RTU (RS485), Digital I/O Optional: TCP/IP, USB2.0, CAN2.0A, PROFINET, EtherCAT *②
Rated voltage	24 V DC ± 10%
Rated current	0.4 A
Peak current	1.0 A
IP class	IP 67
Recommended environment	0~40°C, under 85% RH
Certification	CE, FCC, RoHS

● Build-in Controller	● Gripping Force Adjustable	● Position Adjustable	● Speed Adjustable	● Drop Detection	● Plug & Play	● Self-locking Mechanism
-----------------------	-----------------------------	-----------------------	--------------------	------------------	---------------	--------------------------

Technical Drawings

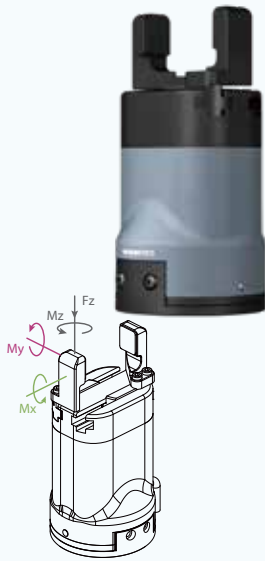


*If you need to customize the flange, it is recommended to design according to the robot installation hole position, or contact us



■ Default finger mounting size

PGC-300-60



Static Vertical Allowable Load

Fz 600 N

Allowable Loading Moment

Mx 15 N·m

My 15 N·m

Mz 15 N·m

*① It depends on the shape of the grasping object, the material and friction of the contact surface, and the acceleration of the motion, if you have any questions, please contact us.

*② Use optional communication, need external communication conversion box, please consult the sales staff for details

Parameters

Product Parameter

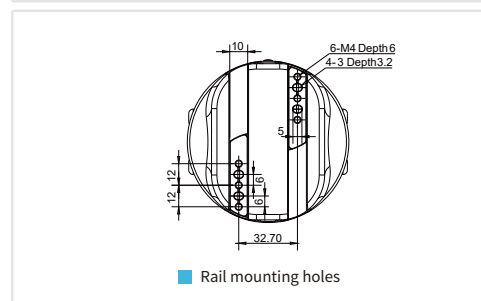
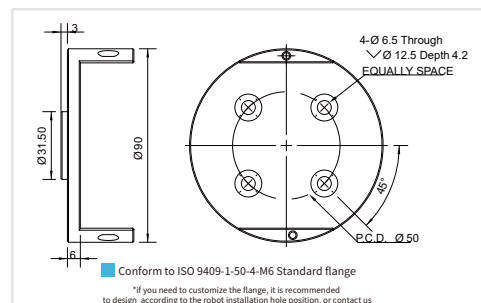
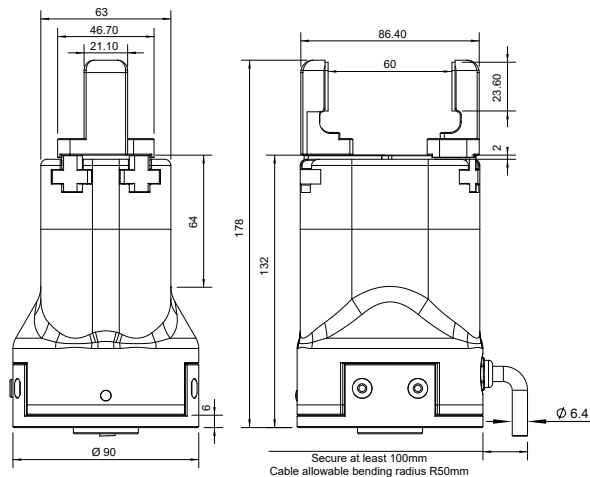
Gripping force (per jaw)	80~300 N
Stroke	60 mm
Recommended workpiece weight * ^①	6 kg
Opening/closing time	0.8 s/0.8 s
Repeat accuracy (position)	± 0.03 mm
Noise emission	< 50 dB
Weight	1.5 kg
Driving method	Precise planetary gears + Rack and pinion
Size	178 mm x 90 mm x 90 mm

Working Environment

Communication interface	Standard: Modbus RTU (RS485), Digital I/O Optional: TCP/IP, USB2.0, CAN2.0A, PROFINET, EtherCAT * ^②
Rated voltage	24 V DC ± 10%
Rated current	0.4 A
Peak current	2.0 A
IP class	IP 67
Recommended environment	0~40°C, under 85% RH
Certification	CE, FCC, RoHS

● Build-in Controller	● Gripping Force Adjustable	● Position Adjustable	● Speed Adjustable	● Drop Detection	● Plug & Play	● Self-locking Mechanism
-----------------------	-----------------------------	-----------------------	--------------------	------------------	---------------	--------------------------

Technical Drawings



PGE Series

RGI Series

RGD Series

PGI Series

PGS Series

PGC Series

AG Series

CG Series