

# CG Series Electric Centric Gripper

CGE-10-10

CGI-100-170

CGC-80-10

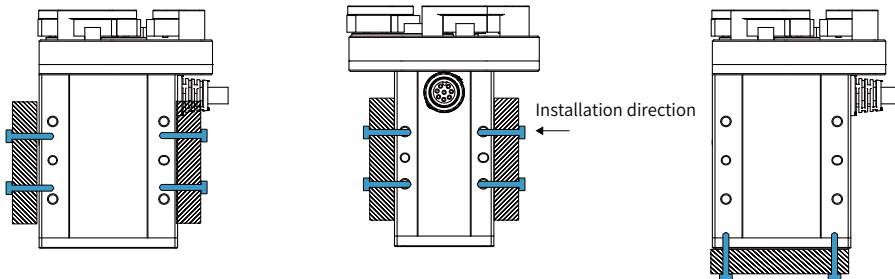


The CG series is a three-finger centric gripper independently developed by DH-Robotics. The three-finger gripping method can better cope with the grasping task of cylindrical workpieces. The CG series is available in a variety of models for a variety of scenarios, stroke and end devices.



## Installation

1. Front and rear installation: use front and rear screw holes for installation
2. Side installation: use side screw holes for installation
3. Bottom installation : use bottom screw holes for installation



## Product Features

### ● High Performance

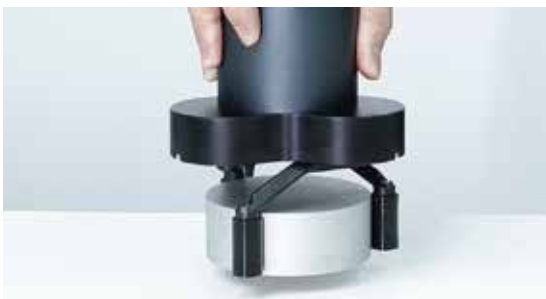
Realize high-precision centering and grasping, the process structure meets the requirements of high rigidity, and the energy density exceeds that of similar products

### ● Long Lifetime

Continuous and stable work above 10 millions times without maintenance.

### ● Overload Protection

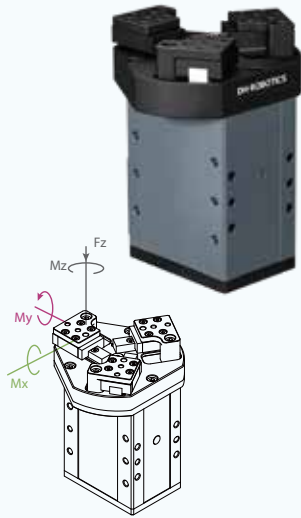
The high-performance servo motor can provide instantaneous overload protection



## Application

Accurate and stable grasping of cylindrical workpieces in the fields of auto parts, automation equipment, precision machining and assembly, etc.

# CGE-10-10



## Static Vertical Allowable Load

Fz 150 N

## Allowable Loading Moment

Mx 0.62 N · m

My 0.62 N · m

Mz 0.62 N · m

\*① It depends on the shape of the grasping object, the material and friction of the contact surface, and the acceleration of the motion, if you have any questions, please contact us.

\*② Use optional communication, need external communication conversion box, please consult the sales staff for details

## Parameters

### Product Parameter

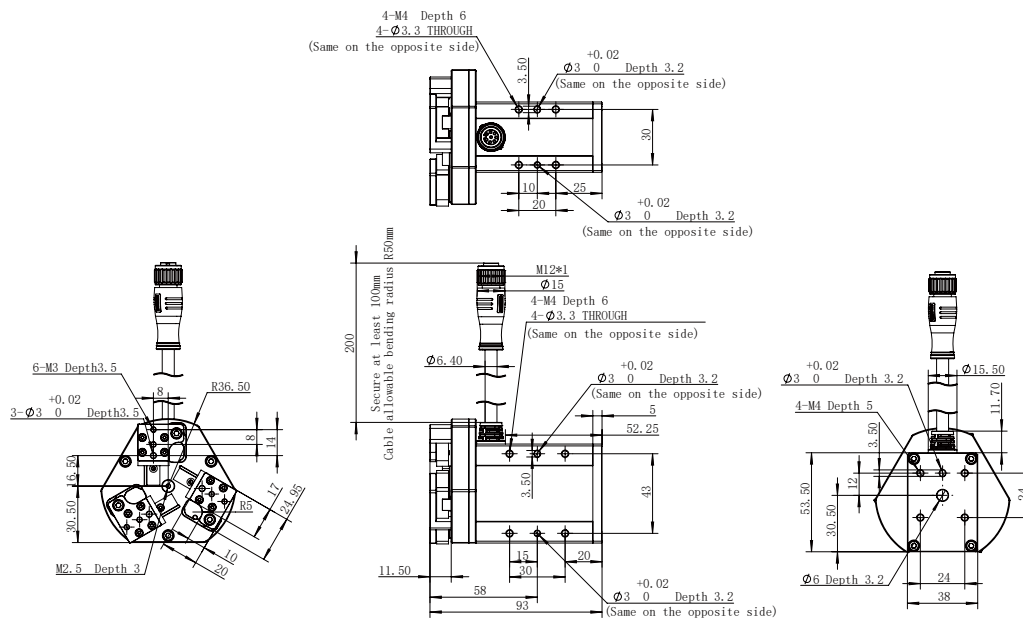
Gripping force (per jaw)	3~10 N
Stroke	10 mm
Recommended workpiece weight * <sup>①</sup>	0.1 kg
Opening/closing time	0.3 s/0.3 s
Repeat accuracy (position)	± 0.03 mm
Noise emission	< 40 dB
Weight	0.43 kg
Driving method	Precise planetary gear reducer + Rack and pinion
Size	94 mm x 53.5 mm x 38 mm

### Working Environment

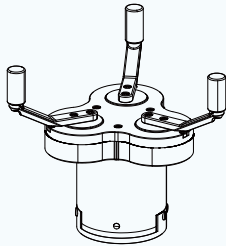
Communication interface	Standard: Modbus RTU (RS485), Digital I/O Optional: TCP/IP, USB2.0, CAN2.0A, PROFINET, EtherCAT * <sup>②</sup>
Rated voltage	24 V DC ± 10%
Rated current	0.3 A
Peak current	0.6 A
Recommended environment	0~40°C, under 85% RH
Certification	CE, FCC, RoHS

<input checked="" type="checkbox"/>	<input checked="" type="checkbox"/>	<input checked="" type="checkbox"/>	<input checked="" type="checkbox"/>	<input checked="" type="checkbox"/>	<input type="checkbox"/>
Build-in Controller	Gripping Force Adjustable	Position Adjustable	Speed Adjustable	Drop Detection	Self-locking Mechanism

## Technical Drawings



# CGI-100-170



This type of gripper is recommended to use the standard finger. If you need to replace it in the application, please contact us for confirmation.

## Parameters

### Product Parameter

Gripping force (per jaw)	30~100 N
Recommended workpiece diameter (inward)	φ40~φ170 mm
Recommended workpiece weight * <sup>①</sup>	1.5 kg
Opening/closing time	0.5 s/0.5 s
Repeat accuracy (position)	± 0.03 mm
Noise emission	< 50 dB
Weight	1.5 kg
Driving method	Precise planetary gears + Rack and pinion
Size	158.4 mm x 124.35 mm x 116 mm (without brake/with brake, same size)

### Working Environment

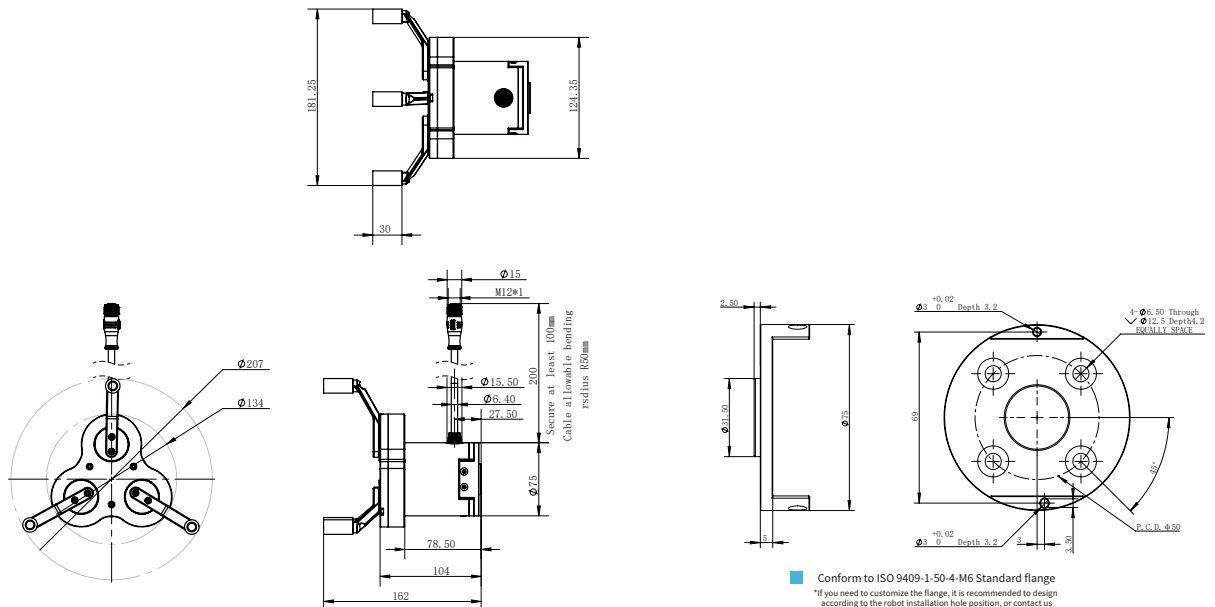
Communication interface	Standard: Modbus RTU (RS485), Digital I/O Optional: TCP/IP, USB2.0, CAN2.0A, PROFINET, EtherCAT * <sup>②</sup>
Rated voltage	24 V DC ± 10%
Rated current	0.4 A
Peak current	1 A
IP class	IP 40
Recommended environment	0~40°C, under 85% RH
Certification	CE, FCC, RoHS

\*<sup>①</sup> It depends on the shape of the grasping object, the material and friction of the contact surface, and the acceleration of the motion, if you have any questions, please contact us.

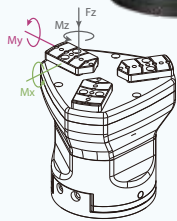
\*<sup>②</sup> Use optional communication, need external communication conversion box, please consult the sales staff for details

<input checked="" type="checkbox"/>	<input checked="" type="checkbox"/>	<input checked="" type="checkbox"/>	<input checked="" type="checkbox"/>	<input checked="" type="checkbox"/>	<input checked="" type="checkbox"/> <input type="checkbox"/>
Build-in Controller	Gripping Force Adjustable	Position Adjustable	Speed Adjustable	Drop Detection	Self-locking Mechanism

## Technical Drawings



# CGC-80-10



## Static Vertical Allowable Load

Fz 200 N

## Allowable Loading Moment

Mx 2.5 N·m

My 2 N·m

Mz 3 N·m

\*① It depends on the shape of the grasping object, the material and friction of the contact surface, and the acceleration of the motion, if you have any questions, please contact us.

\*② Use optional communication, need external communication conversion box, please consult the sales staff for details

## Parameters

### Product Parameter

Gripping force (per jaw)	20~80 N
Single jaw	10 mm
Recommended workpiece weight *①	1.5 kg
Opening/closing time	0.2 s/0.2 s
Repeat accuracy (position)	± 0.03 mm
Noise emission	< 50 dB
Weight	1.5 kg
Driving method	Precise planetary gear reducer + Rack and pinion
Size	141 mm x 103 mm x 75 mm

### Working Environment

Communication interface	Standard: Modbus RTU (RS485), Digital I/O Optional: TCP/IP, USB2.0, CAN2.0A, PROFINET, EtherCAT *②
Rated voltage	24 V DC ± 10%
Rated current	0.3 A
Peak current	1 A
IP class	IP 67
Recommended environment	0~40°C, under 85% RH
Certification	CE, FCC, RoHS

● Build-in Controller	● Gripping Force Adjustable	● Position Adjustable	● Speed Adjustable	● Drop Detection	● Plug & Play	● Self-locking Mechanism
-----------------------	-----------------------------	-----------------------	--------------------	------------------	---------------	--------------------------

## Technical Drawings

