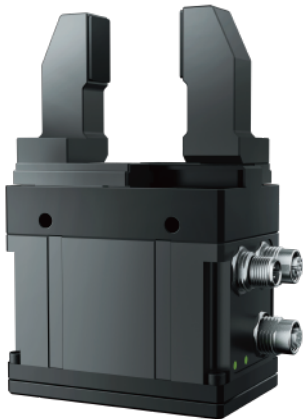


PGI-140

Industrial parallel grippers

DH-ROBOTICS



Gripping force(per jaw)

Opening/closing stroke(both sides)

40 ~ 140 N

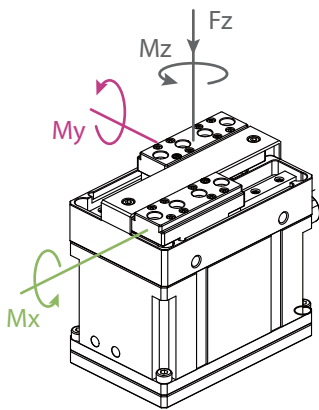
80 mm

Mechanical specifications

Position repeatability (both sides)	± 0.03 mm
Finger backlash	Unilateral 0.2mm or less
Opening/closing time	0.7 s/0.7 s
Driving method	Rack and pinion + Linear guidance
Weight	1 kg (Exclude fingers)
Noise emission	< 50 dB

Electrical specifications

Communication interface	Standard: Modbus RTU (RS485), Digital I/O Optional: TCP/IP, USB2.0, CAN2.0A, PROFINET, EtherCAT
Nominal voltage	24 V DC $\pm 10\%$
Nominal current	0.5 A
Peak current	1.2 A
Ingress protection rating	IP 54
Recommended operating environment	0~40°C, 85% RH under environment



Allowable vertical load (static)

Fz: 300 N

Allowable moment (static)

Mx: 7 N·m

My: 7 N·m

Mz: 7 N·m

